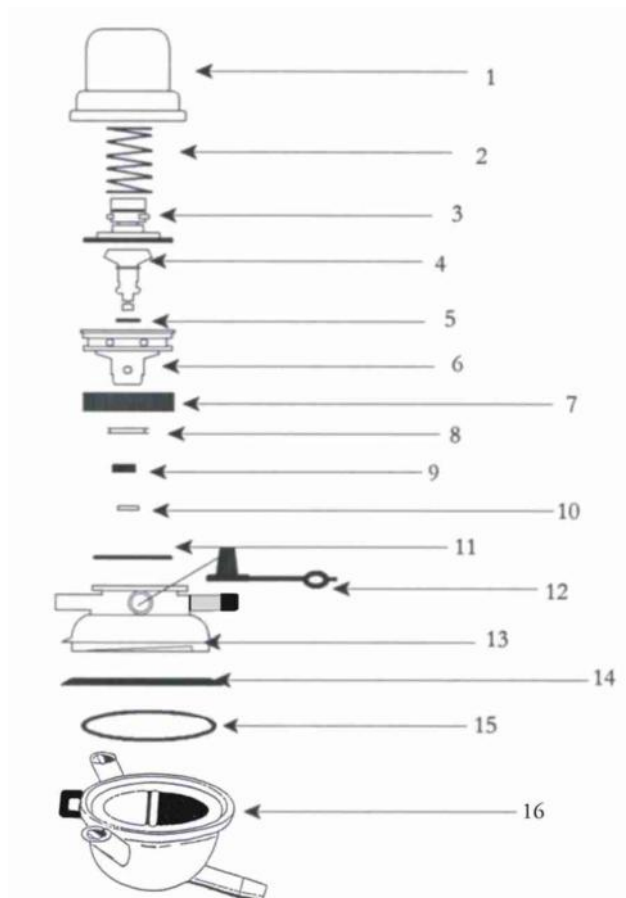




Goat Claw



| NO. | PART | DESCRIPTION |
|-----|-----------|---------------------|
| 1 | MZ10006NP | Dome |
| 2 | MZ10007NP | Pulsator Spring |
| 3 | MZ10005NP | Diaphragm Complete |
| 4 | MZ10022NP | Bobbin Only |
| 5 | MZ10009NP | Bobbin 'O' Ring |
| 6 | MZ10010NP | Bobbin Housing |
| 7 | MZ10028NP | Air Filter |
| 8 | MZ10015NP | Bobbin Housing Seal |
| 9 | MZ10011NP | Bobbin Valve |
| 10 | MZ10012NP | Bobbin Clip |
| 11 | MZ10014NP | Middle 'O' Ring |
| 12 | MZ10002NP | Wash Plug |
| 13 | MZ10100NP | Goat Middle |
| 14 | MZ10030NP | Claw Protector Seal |
| 15 | MZ10017NP | Base 'O' Ring |
| 16 | MZ10106NP | Goat Base |

OPERATION

To obtain the maximum performance from your NuPulse Milker, here are some helpful points.

- Recommended vacuum levels are:
 - High Line: Standard Unit—12.5" Hg
 - Medium Lines and Weight Jars: 11.5" Hg
 - Low Lines and Bucket Milkers: 10.5" Hg
 NOTE: Add 1" when using tube type milk meters.
- Pulsation rate should be set at **75-85** pulsations per minute for Goat Units in static mode (non-milking). **To increase** the pulsation rate, turn the cam **counterclockwise**. **To decrease** the pulsation rate, turn the cam **clockwise**.
 NOTE: There is a (+) and a (-) molded into the top of the cam knob for reference.
- Clean the air filter regularly.
- Use hose hangers in stanchion barns to properly position the milker under the goat.
- Keep the milk hose as short as possible.
- Check the diaphragm, bobbin valve, bobbin 'O' ring and bobbin vacuum hole regularly for cleanliness and proper operation.

CLEANING

Wash water temperature should not drop below 110°F during recirculation cycle, and should have a Ph of 11.5 or higher.

C.I.P. Cleaning using Jetters

- Put teat cups on Jetters.
- Insert jetter tube adapters into claw wash port.
- Manually clean the pulsator parts weekly or as needed.

CAUTION

Do not over tighten the claw parts when reassembling. Let the 'O' rings do their job.

TROUBLESHOOTING

Units Falling Off

- Over milking
- Wet, soapy teats
- Worn rubberware
- Vacuum level too low
- Line flooding

Goats Kicking

- Vacuum set too high
- Pulsator malfunction
- Stray voltage
- Over milking
- Sore teats

Pulsators Slow Down or Stop

- Milk hose kinked
- Air leaks in claw
- Bobbin hole plugged
- Dirty air filter
- Damaged or missing 'O' ring
- Damaged diaphragm rubber

Units Speed Up

- This is normal during heavy milk flow

Slow Milking

- Vacuum too low
- Worn inflations
- Vacuum leaks
- Clogged bowl vent (MLX)
- Over milking
- Milk hose or inlet valve undersized
- Pulsator rubberware worn out
- Line flooding—too many units per slope, milk inlets lower 2/3 of pipeline