

300 E claw with valve

#14253 - Replacement 300e claw with valve, plastic tee SxS

#14254 - Replacement 300e claw with valve,SS, 9/32", SxS

#14255 - Replacement 300e claw with valve,SS,3/8 x 1/4, BxF

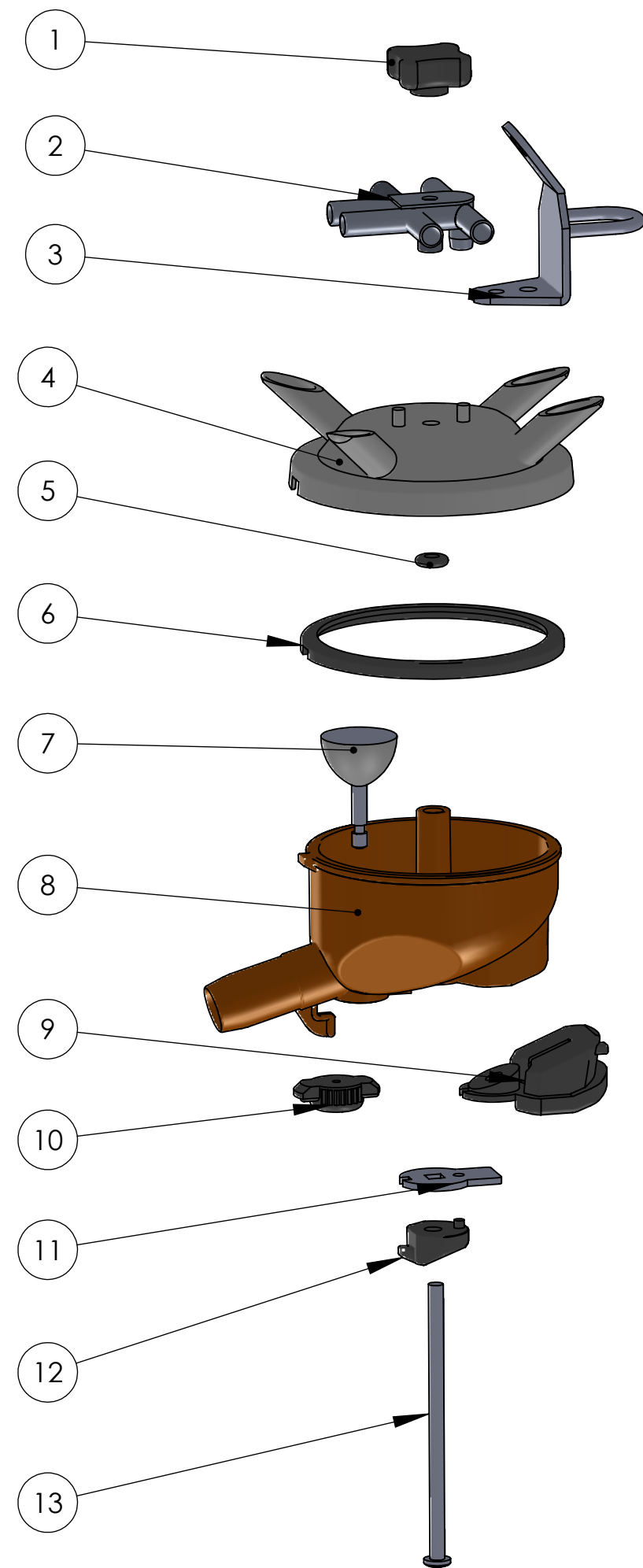
#14256 - Replacement 300e claw with valve,SS,3/8 x 9/32,BxF

#14257 - Replacement 300e claw with valve,plastic 9/32",BxF

#14258 - Replacement 300e claw with valve,SS,1/4",BxF

#14259 - Replacement 300e claw with valve,SS,9/32",BxF

For Non-vented use -NV behind the part number



ITEM	PART NUMBER	DESCRIPTION	QTY
1	14313	Black nut	1
2	14320	Stainless 9/32" x 9/32" Side to Side Tee	
	14324	Stainless 9/32" x 9/32" Back to Front Tee	
	14321	Stainless 3/8" x 3/8" Back to Front Tee	
	14323	Stainless 3/8" x 1/4" Back to Front Tee	
	14336	Stainless 1/4" x 1/4" Back to Front Tee	
	14309	Plastic 9/32" x 9/32" Side to Side Tee	
	14335	Plastic 9/32" x 9/32" Back to Front Tee	
3	14312	Stainless top hanger with loop	1
	14346	Stainless to hanger with hook	
4	14316	Stainless 300 E top only, vented	1
	14314	Stainless 300 E top only, non-vented	
5	14307	Small gray center gasket	1
6	14305	Bowl gasket	1
7	14351	Gray shutoff valve	1
8	14350	Bowl WITH hole	1
9	14306	Rubber bumper	1
10	14302	Shutoff clip	1
11	14318	Stainless flat tab	1
12	14304	Bolt holder	1
13	14308	Bolt for claw with valve	1
14	14355	Rubber parts kit for claw with valve, (Includes: 5-7, 9, & 10)	