

# **Instruction Manual for Portable Cow Milker**

**E Zee Milking Equipment, LLC  
3910 East Newport Road  
Gordonville PA 17529  
1-888-304-6276**



# Instructions

This Deluxe pump unit ships fully assembled by truck freight. Since there is no assembly required, it should be ready to put regular unleaded gasoline into the tank upon arrival.

This unit has a vapor oil vane vacuum pump. Check oil level upon arrival, and before each use. The oil level gauge is the small piece of clear hose in a U-shape on the side of the pump. Oil level should be close to the top of oil tank. To add oil simply pop out the black plastic plug on top of oil tank. Refill with high quality 10w40 motor oil. Press the plug back into place once oil level is full.

The metal tank under the pump is a moisture trap and vacuum storage tank. Milk or water that gets drawn into the tank should drain out the duckbill drain in the bottom of the tank. If too much water or milk enters the tank, the pump will need to be flushed. See the maintenance section for instructions on flushing the vacuum pump.

## How to control vacuum level

The ideal vacuum level for milking cows is between 14 and 15 inches of vacuum. To adjust level, loosen the nut on top of the regulator and turn the main body to adjust. Turn the body clockwise to increase and counter-clockwise to decrease vacuum level. Tighten the nut when the desired vacuum level is reached.

## **Cleaning instructions for the bucket milker**

Keeping your milking machine clean and sanitary is important for producing healthy milk that will keep without spoiling. The milker should be cleaned immediately after each use.

1. **Warm Rinse:** Draw two gallons of warm water (100F) through the inflations and hoses with the vacuum pump on. Discard this water.
2. **Hot Wash:** Mix a mild dishwash solution with a few gallons of hot water. Draw the water through the milker as in step one. Repeat this step at least three times.
3. **Rinse:** Fill a bucket with warm water. Draw this through the milker as in step one.
4. **Cold Sanitize:** Sanitize your equipment with a cold chlorine solution 15 minutes before milking. Hang all components so they can drip dry in a sanitary, clean place. Store all buckets and pails upside down on an open rack so they can drain and dry out.

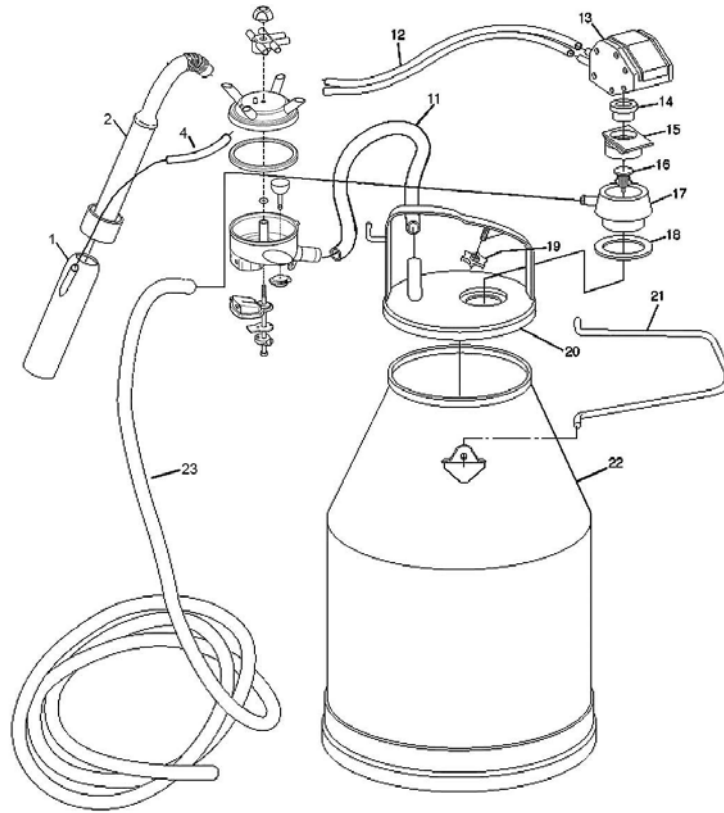
# Maintenance

## What to do if milk enters the vacuum pump

If too much water or milk gets into the tank, it will be drawn into the vacuum pump. If this occurs, it will need to be flushed out.

1. Locate the oil tube and remove at the oil reservoir.
2. Remove the plug on the bottom of exhaust chamber  
(This is to drain chamber after flushing process is complete)
3. Kerosene or fuel oil works best for the flushing process. **DO NOT** use gasoline or any other highly flammable liquid to flush the vacuum pump. Start the pump and insert the tube into the cleaning fluid. Allow the pump to draw the fluid in. Periodically let air enter the tube along with the fluid. You may need up to a gallon of fluid to fully clean the pump.
4. Once the cleaning fluid is gone, use the same method to draw about 5 ounces of 10w40 motor oil into the pump to complete the flushing process.
5. Put the plug back in exhaust chamber

# Replacement Parts List



- |  |  |
|--|--|
| 1: #10010 Rolled edge shell              | 17: # 23031 Chamber housing            |
| 2: # 25003 KF-01 inflation               | 18: # 23028 Chamber gasket             |
| 4: # 25150 9" air tube                   | 19: # 33004 Plastic lid nut            |
| 5: # 14300 new style claw w/valve        | 19: # 33002 Stainless lid nut          |
| 11: # 25145 32" x 5/8" clear milk hose   | 20: # 33000 Stainless lid              |
| 12: # 25143 37" x 9/32" twin rubber hose | 20A: # 25195 Lid gasket                |
| 13: # 20360 D#95 pulsator assembly       | 21: # 30151 Stainless handle, short    |
| 14: # 23029 Chamber seal                 | 22: # 30165 65 pound bucket            |
| 15: # 23040 Chamber slide                | 23: # 25141 6' x 1/2" rubber vac. hose |
| 16: # 23027 Check valve for chamber      | 23A: # 25140 14' x 1/2" clear vac hose |