

KLEEN-FLO® 30500 & 30520 2 GALLON HOME PASTEURIZER

Operating Instructions Manual



 Specializing in New & Used Milking Equipment
E-Zee Milking Equipment, LLC
Here to serve the dairy industry

POINTS TO REMEMBER

- 1) Pasteurize the milk as soon as possible after milking. It is not necessary to cool raw milk, if it is pasteurized within 2 hours. Warm milk can be pasteurized faster than pre-cooled milk. This helps prevent the multiplication of bacteria.
- 2) Cool the pasteurized milk as quickly as possible to a low temperature. (**34° - 38° Fahrenheit**)
- 3) Cool the milk with only pure water that you know is safe to drink.
- 4) Wash and rinse the pasteurizer immediately after each use.
- 5) Check the temperature of the milk periodically immediately after the buzzer sounds. It should not be less than 156° Fahrenheit at the top of the milk container.
(Please see the thermostat adjustment on the next page for more details)
- 6) Take care of the Pasteurizer as you would any other precision electrical appliance. Rough handling may not only dent the containers but may affect the operation of the pasteurizer. Every two weeks or so brush the inside of the water container and the heating coil to avoid any build-up.

OPERATING INSTRUCTIONS

- 1) Fill the inner milk container with milk or cream, any amount up to 2 gallons
- 2) Set inner milk container into pasteurizer
- 3) Place inner container cover onto the milk container
- 4) Set pressure cover lock on top of milk container cover so that the ball is centered in vacuum relief hole. Grasp pressure cover lock firmly using the circular finger grips. Press down and turn until locking arms are positioned securely under positioning brackets on inside of the pasteurizer.
- 5) Plug small rubber stopper into the end of the outlet hose
- 6) Put the other end of the outlet hose onto the port coming out the side of the pasteurizer
- 7) Using the small inlet hose, fill pasteurizer with water until milk container is completely covered. Using warm water can reduce the pasteurization time considerably.
- 8) Place the large outer container cover on pasteurizer and plug the electrical cord into a standard house 110 volt outlet (**Note: this only applies to our standard version. The 220 volt pasteurizers do not come with a plug on the end of the cord**)

COOLING

- 1) When pasteurizing cycle is complete, the pasteurizer will turn off automatically and a loud buzzer will sound. After you hear the buzzer, unplug the electrical cord immediately.
- 2) Remove the small rubber plug from the outlet hose and allow the hot water to drain into the sink. Remove top cover from pasteurizer and insert inlet hose between the two canisters (**be sure hose is pushed well down towards the bottom of the pasteurizer**). Place inlet hose onto the faucet and turn cold water on gradually. Allow cold water to circulate around the milk container until milk is cooled to approximately the same temperature as the water you're using to cool the milk.
- 3) Remove milk container from pasteurizer and store in refrigerator. Be sure the pressure cover is locked so the milk is sealed while in the refrigerator

CLEANING

- 1) Milk container, cover, gasket and pressure cover lock should be thoroughly cleaned after each use with hot water and a good household detergent. The gasket can be removed using a table knife or small flat screwdriver. Avoid using a sharp instrument for this purpose as it may cut the gasket. Thorough cleaning is necessary to prevent formation of milk stone. Rinse with hot water and dry the parts thoroughly.
- 2) The water container should also be emptied and wiped dry with a clean cloth after each use. Remember to brush the inside of the water container and the heating coil periodically, do not use a strong cleaner when washing these parts, just using wash water is fine.
CAUTION: The pasteurizer should NEVER get submerged in water

THERMOSTAT ADJUSTMENT

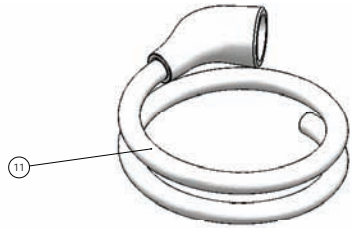
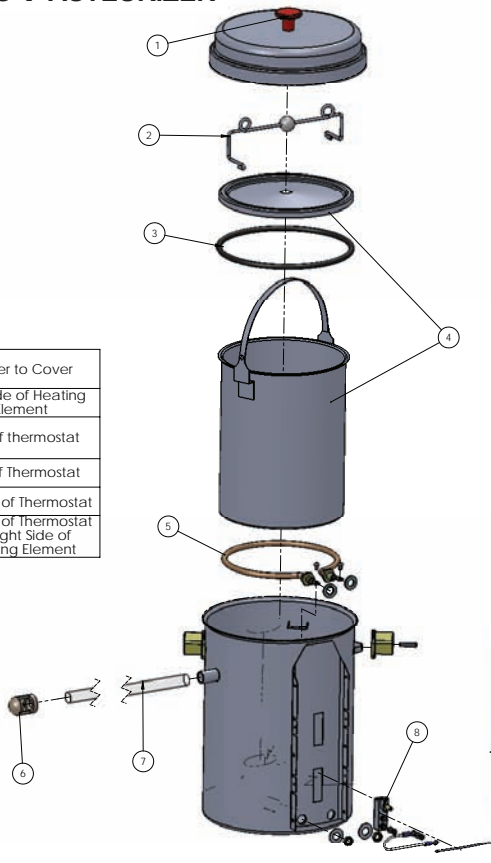
- 1) Twice a month or so you should check the temperature of the milk. After the buzzer sounds, before the cooling procedure starts, let the hot water run out until it is level with the outlet port on the side of the pasteurizer. Then insert a thermometer into the hole in the milk container lid to check the temperature. Milk temperature should register 156° - 159°.
- 2) If the temperature is too high or too low, insert a screwdriver through the small hole in the front panel and turn the adjusting screw. Turn right to raise temperature (**clockwise**) – turn left to lower the temperature (**counterclockwise**)

WARNING!!!

CONTAINER AND CONTENTS WILL BE AT SCALDING TEMPERATURES.
AVOID CONTACT UNTIL AFTER COOLING PROCEDURE

30500 110v KLEEN FLO PASTEURIZER

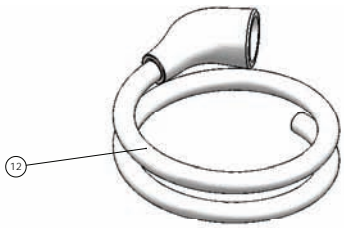
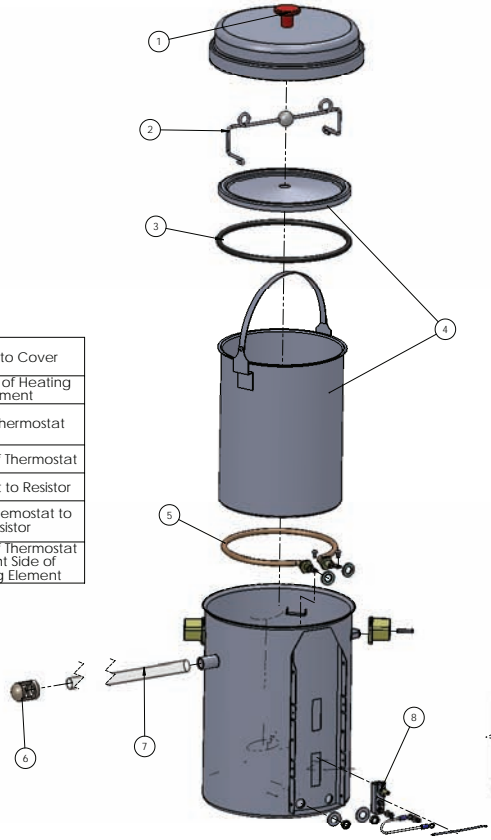
Green Power Cord Wire	Buzzer to Cover
Black Power Cord Wire	Left Side of Heating Element
White Power Cord Wire	Top of thermostat
Yellow Buzzer Wire	Top of Thermostat
Yellow Buzzer Wire	Bottom of Thermostat
Short White Connecting Wire	Bottom of Thermostat to Right Side of Heating Element



ITEM NO.	PART NO.	DESCRIPTION	QTY.
1	96000	Red Knob for Pasteurizer lid, copy	1
2	30575	Inner bucket lid latch with ball for pasteurizer	1
3	99715	O-ring for Pasteurizer	1
4	30555	Pasteurizer Inner bucket	1
5	30560	Heating Element for Pasteurizer - 110V	1
6	56379	3/4" pipeline nipple closure, BROWN	1
7	25235	5/8" clear tubing (per foot) , Glitex	1
8	30568	Thermostat for 110 volt pasteurizer	1
9	30569	Buzzer for 110 volt pasteurizer	1
10	30572	Power cord for 110 volt pasteurizer	1
11	30567	Pasteurizer hose with faucet adapter	1

30520 220v KLEEN FLO PASTEURIZER

Green Power Cord Wire	Buzzer to Cover
Black Power Cord Wire	Left Side of Heating Element
White Power Cord Wire	Top of thermostat
Yellow Buzzer Wire	Bottom of Thermostat
Yellow Buzzer Wire	Connect to Resistor
Yellow Connecting Wire	Top of Thermostat to Resistor
Short White Connecting Wire	Bottom of Thermostat to Right Side of Heating Element



ITEM NO.	PART NO.	DESCRIPTION	QTY.
1	96000	Red Knob for Pasteurizer lid, copy	1
2	30575	Inner bucket lid latch with ball for pasteurizer	1
3	99715	O-ring for Pasteurizer	1
4	30555	Pasteurizer Inner bucket	1
5	30565	Heating Element for Pasteurizer - 220V	1
6	56379	3/4" pipeline nipple closure, BROWN	1
7	25235	5/8" clear tubing (per foot) , Glitex	1
8	30568	Thermostat for 220 volt pasteurizer	1
9	30569	Buzzer for 220 volt pasteurizer	1
10	30570	Resistor for 220 volt pasteurizer	1
11	30571	Power cord for 220 volt pasteurizer	1
12	30567	Pasteurizer hose with faucet adapter	1