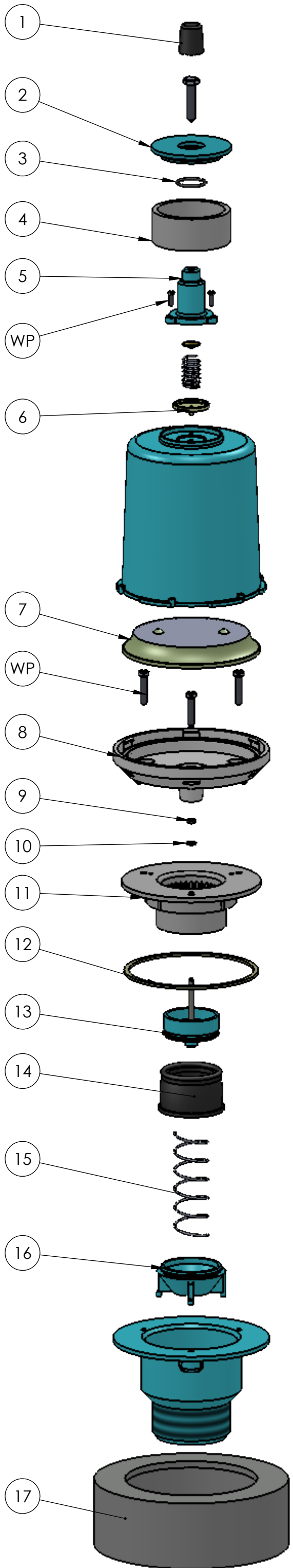


# #17890 Mark II Regulator



| ITEM | PART NUMBER | DESCRIPTION   | QTY |
|------|-------------|---|-----|
| 1    | 17862       | Replacement top rubber knob                                   | 1   |
| 2    | 17867       | Filter cap  | 1   |
| 3    | 17863       | Filter cap o-ring Sentinel Mark II                            | 1   |
| 4    | 17852       | Replacement top dome filter                                   | 1   |
| 5    | 17865       | Adjuster housing  | 1   |
| 6    | 17869       | Dome diaphragm  | 1   |
| 7    | 17856       | Diaphragm with plate  | 1   |
| 8    | 17864       | White flange assembly   | 1   |
| 9    | 17859       | Rod seal  | 1   |
| 10   | 17868       | Retaining washer  | 1   |
| 11   | 17854       | Flow ring   | 1   |
| 12   | 17858       | Silicone outlet seal  | 1   |
| 13   | 17866       | Poppet assembly   | 1   |
| 14   | 17853       | Roll seal   | 1   |
| 15   | 17855       | Closing spring for Mark II regulator                          | 1   |
| 16   | 17857       | Plug for Mark II regulator                                    | 1   |
| 17   | 17849       | Replacement foam filter                                       | 1   |
|      | 17850       | Sentinel Mark II foam filter                                  |     |
|      | 17870       | 4 piece repair kit for Mark II (Includes: 3,6,13 &14)         |     |
|      | 17875       | Worn parts kit for Mark II (Includes: 1,WP,3,5-7,10-11,13-14) |     |